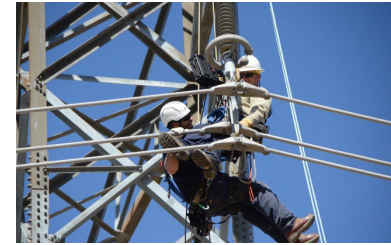
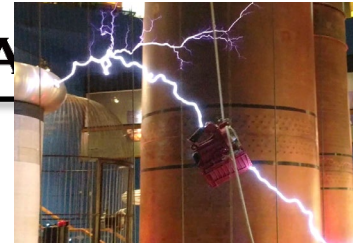
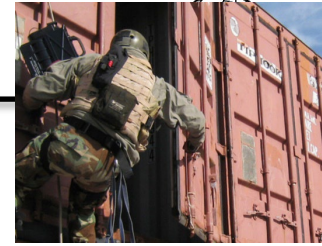
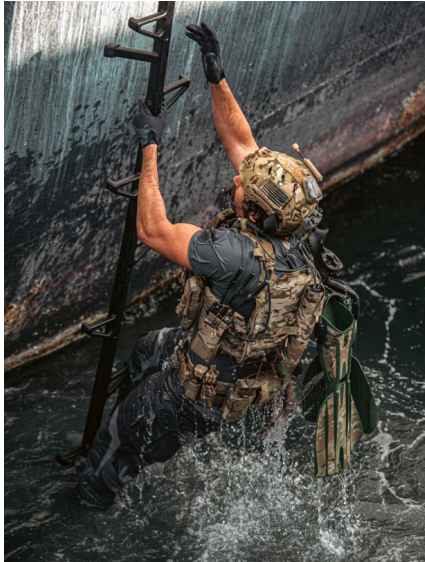


 **ATLAS DEVICES**  
*HIGHER, FASTER, SAFER*

Lightweight Operator Ladder  
(LOL)  
2024



## Key Verticals



Tactical



Utility



Aircraft



Special Projects

**Atlas Devices is a solutions provider for professionals in high-risk access occupations to help them work Higher, Faster, Safer.**



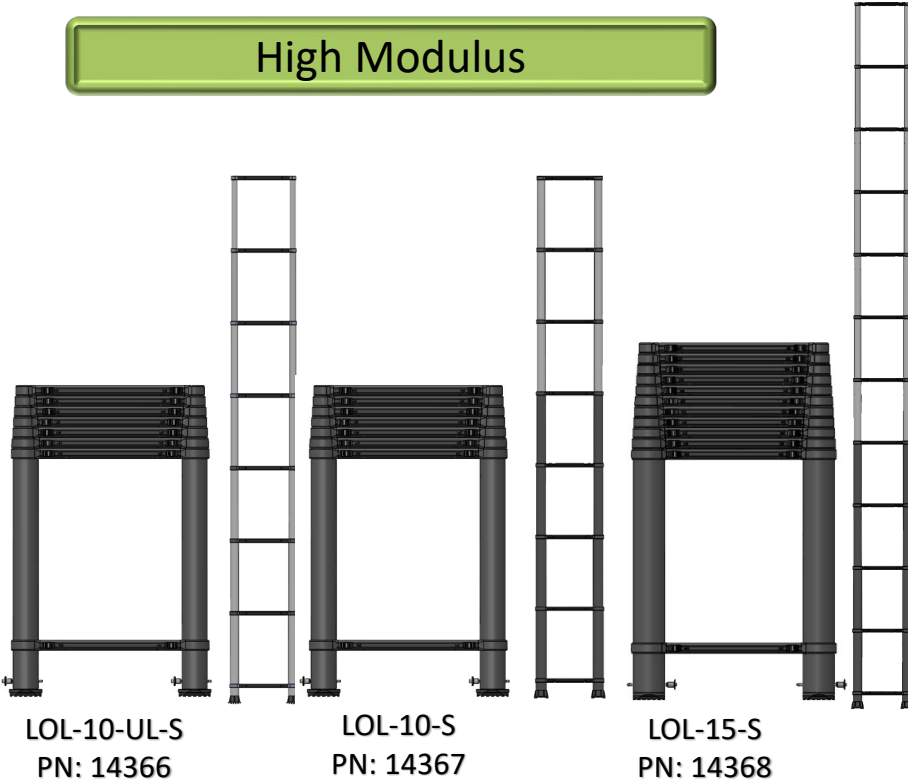
**ATLAS DEVICES**

*HIGHER, FASTER, SAFER*

Tactical

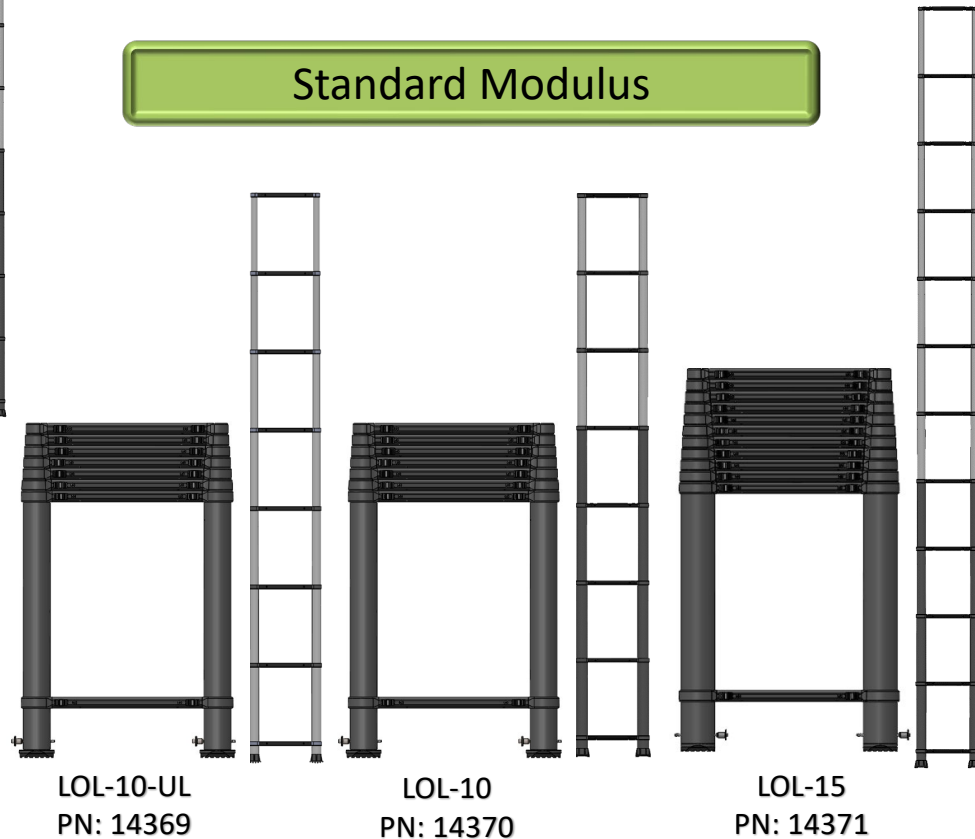
# Lightweight Operator Ladder (LOL)

## High Modulus



\*High Modulus provides increased stiffness (S-Models)

## Standard Modulus



# Configurations: LOL-10-UL, UL-S



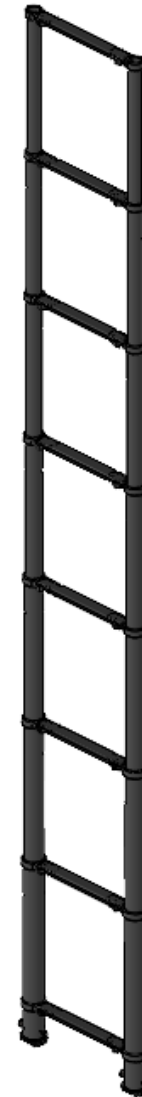
**ATLAS DEVICES**

HIGHER, FASTER, SAFER

LOL-10-UL (PN: 14369)

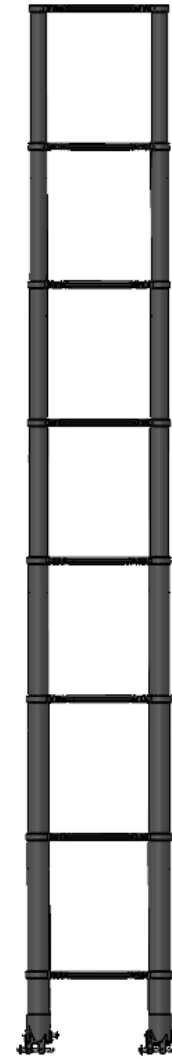
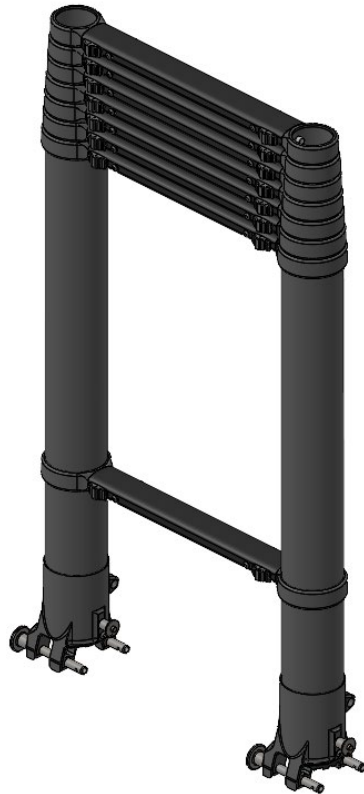
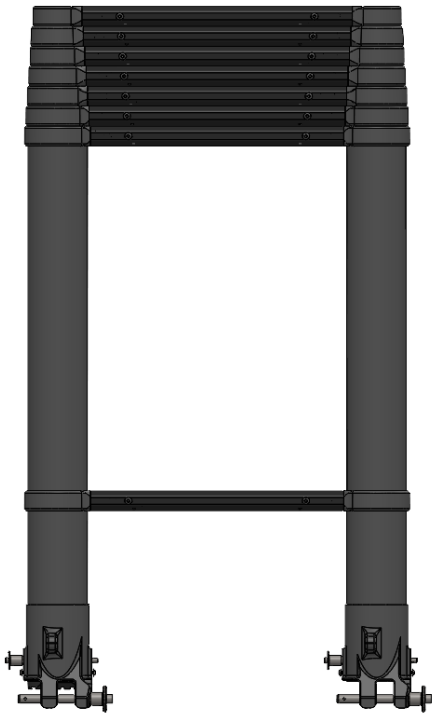
LOL-10-UL-S (PN: 14366)

\*Shown with standard foot



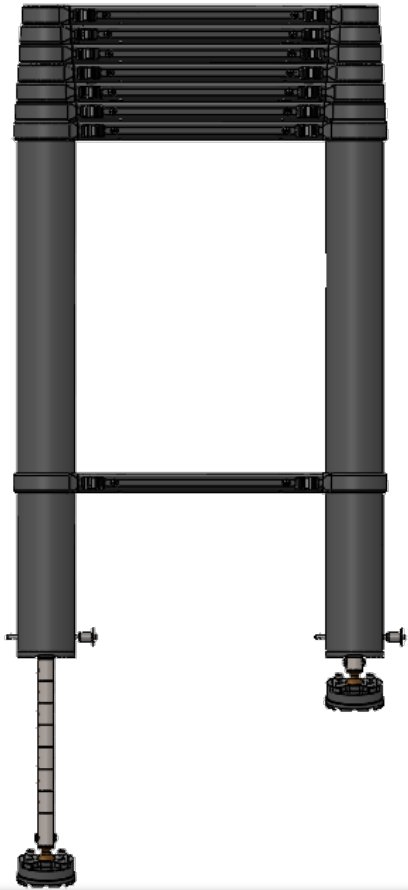
# Configurations: LOL-10, 10-S

LOL-10 and 10-S  
Shown with optional  
joining adapter



# Configurations: Common Foot Adapter (CFI)

LOL-10 and 10-S  
Shown with optional  
extendable Common  
Foot Interface (CFI) Foot



# Configurations: LOL-15, 15-S

LOL-15 and 15-S  
Shown with included standard  
foot



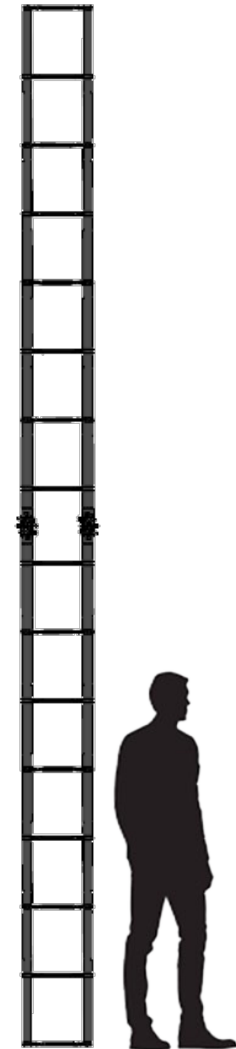
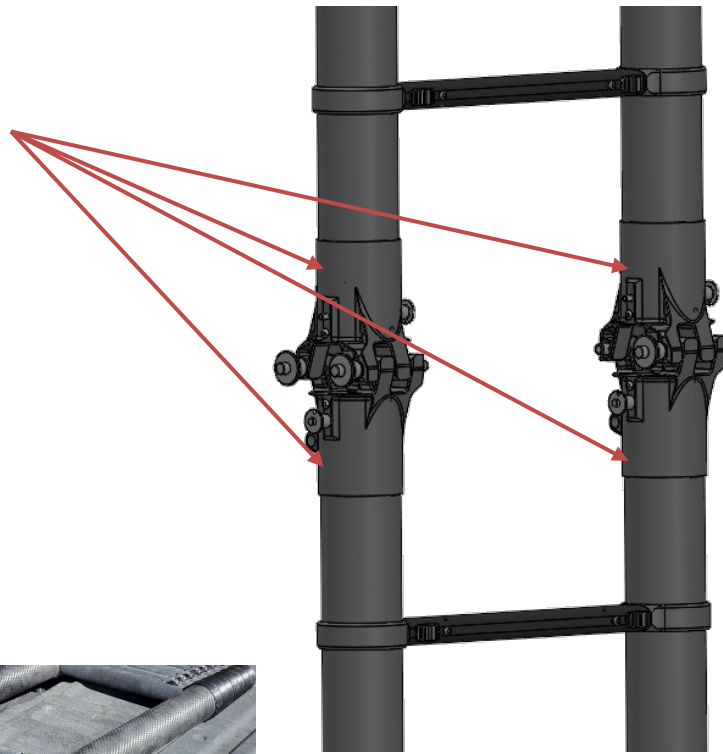
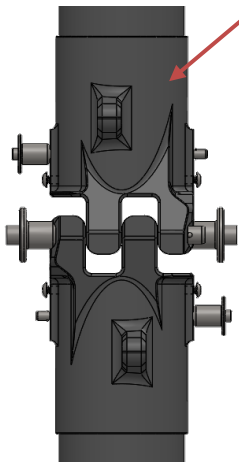


# Configurations: Extended Ladder

LOL-10 (PN: 14370) x 2 **or**  
LOL-10-S (PN: 14367) x 2  
Max Length: 20.1ft

Requires:  
Joining Feet (PN: 15967\_4pcs)

Replacement foot (PN: 16166)

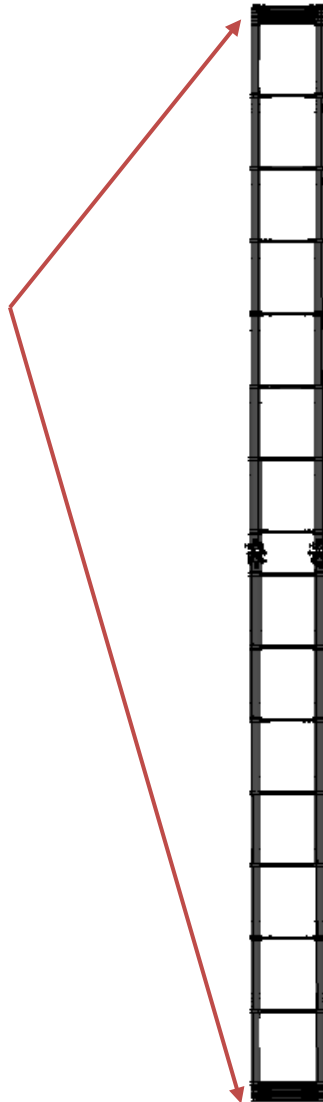
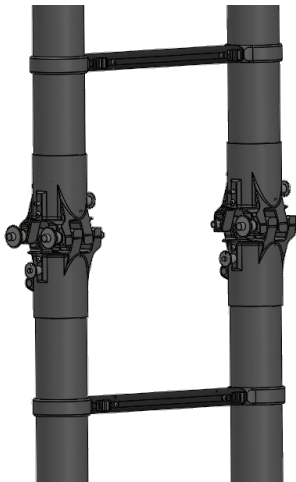
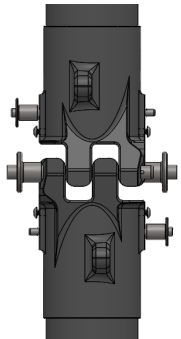


# Configurations: Extended Ladder

LOL-15 (PN: 14371) x 2 or  
LOL-15-S (PN: 14368) x 2  
Max Length: 20.1ft

Requires:  
Joining Feet (PN: 15967\_4pcs)

\*7 inner sections extended each ladder, outer sections MUST BE collapsed; LOL-15 and 15-S not rated for full double length



# Configurations: A-Frame

LOL-10 (PN: 14370) x 2 or

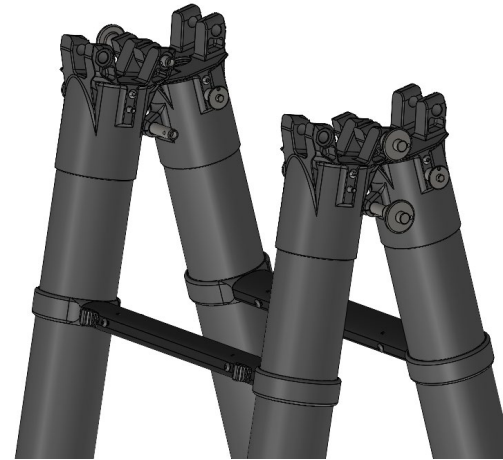
LOL-10-S (PN: 14367) x 2

Max Length: <10ft

\*Requires:

Joining Feet (PN: 15967\_4pcs)

LOL-10 pictured



# Configurations: A-Frame

LOL-15 (PN: 14371) x 2 or

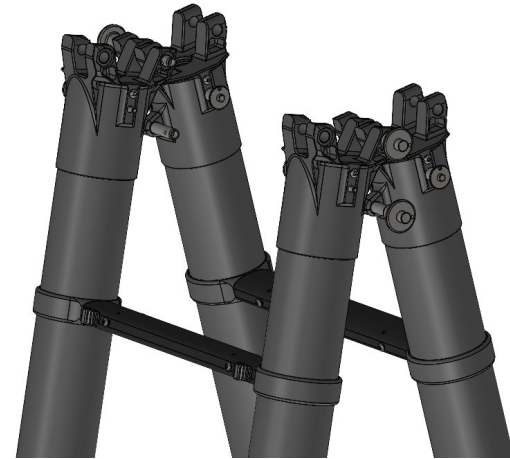
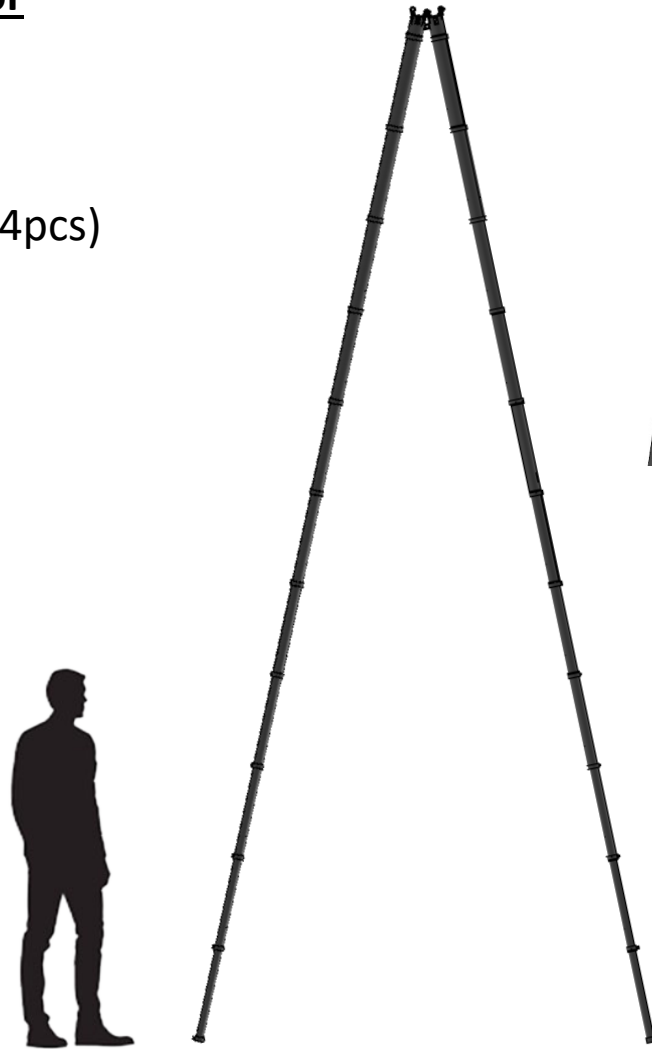
LOL-15-S (PN: 14368) x 2

Max Length: <10ft

\*Requires:

Joining Feet (PN: 15967\_4pcs)

LOL-15 pictured



# Configurations: Scaffold

LOL-10 (PN: 14370) x 2 Plus Scaffold Section or  
LOL-10-S (PN: 14367) x 2 Plus Scaffold Section or  
LOL-15 (PN: 14371) x 2 Plus Scaffold Section or  
LOL-15-S (PN: 14368) x 2 Plus Scaffold Section

Requires:

Joining Feet (PN: 15967) x 2 (8pcs)



LOL-10 pictured

# Configurations: Common Foot Adapter (CFI)

Common Foot Adapter (CFI)

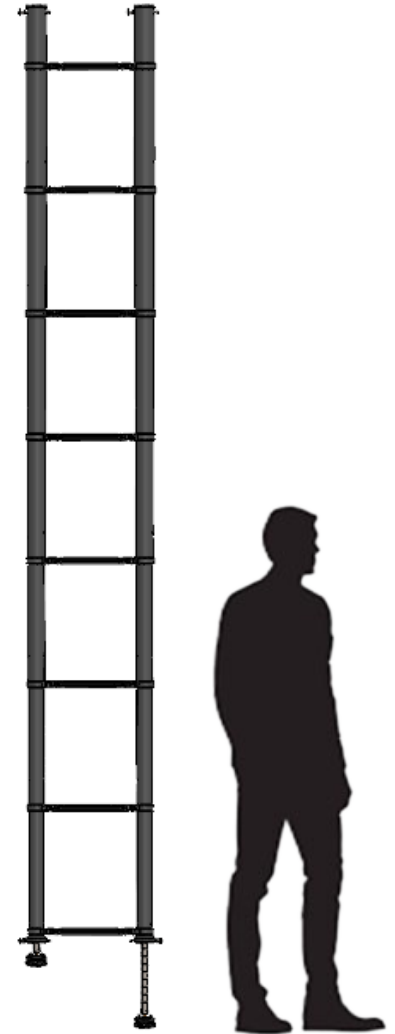
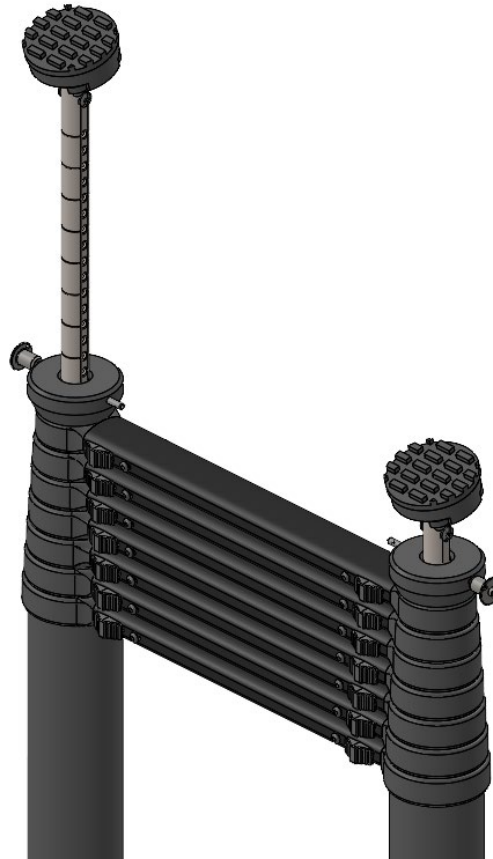
PN: 15958 (2pcs)

Top Section Adapter

Compatibility

CFI adapter for inverted use

(e.g. LOL-20)



# Configurations: Common Foot Adapter (CFI)

## Common Foot Adapter (CFI)

PN: 15958 (2pcs)

Removable rubber pad foot can be replaced with CFI or joining foot without tools



Common Baseline Foot (included with all models): Rubber pad



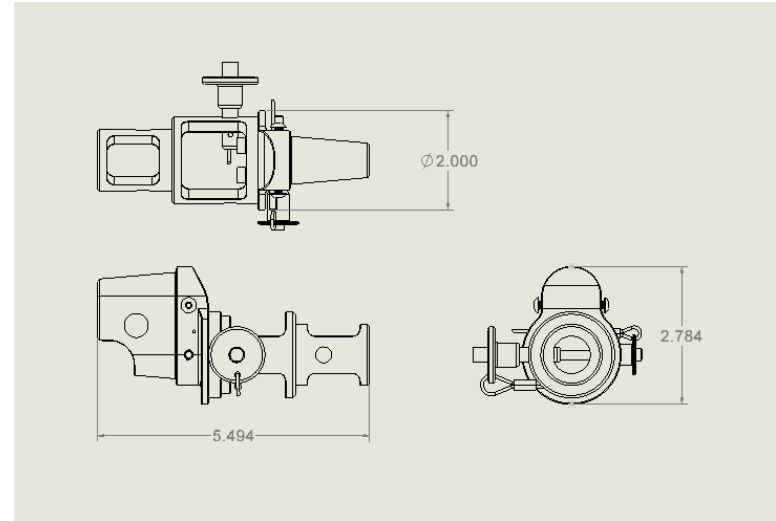
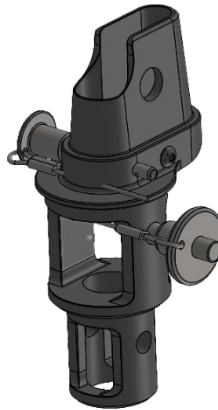
Optional CFI installed  
(L: max length / R: min length).  
For use on stairwells or sloping terrain



# Configurations: Top Adapter (CFI compatible)

LOL-Top Adapter  
PN: 16098 (ea) 16099 (pair)

Compatible Top Adapter for attachment of Flexielement (01643) and urban / tactical hooks



\*Hook Options



LOL-10-UL

LOL-10, LOL-15



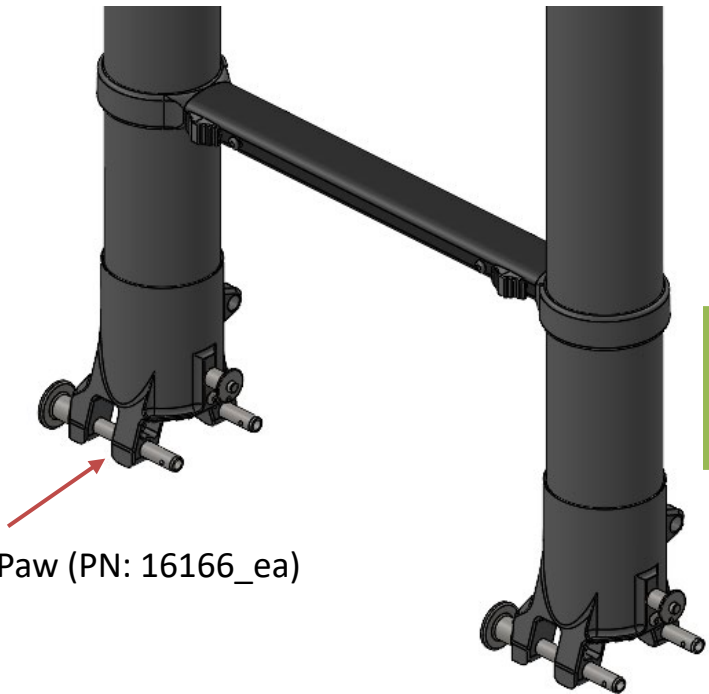
When inverted, the Top adapter is compatible with the CFI



# Configurations: Joining Adapters

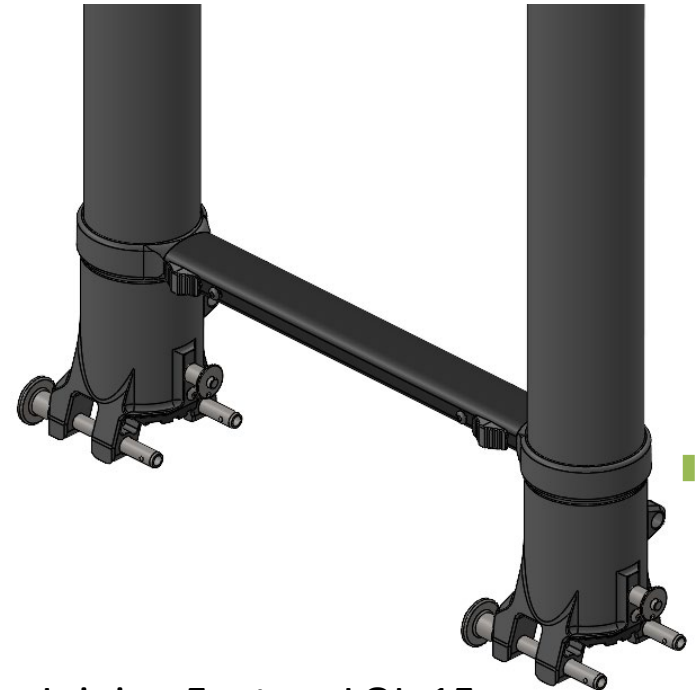
Joining Foot (PN: 15967)

Can be installed on LOL-10, 10-S, 15,  
and 15-S after standard foot pad is  
removed



Joining Paw (PN: 16166\_ea)

Joining Feet on LOL-10,  
10-S



Joining Feet on LOL-15,  
15-S

Scaffold Section, Standard: *Joins 2/ea LOL-10s or LOL-15s for lateral span*



*Scaffold Section + 4/ea Joining Feet. Platform plate available to create flat surface between rungs*



*2 LOL-10 sections collapsed for 8-foot height*



*Fully extended for 10-foot height*



*LOL-10 x2 + Scaffold Section*



*Set for installation with CFIs installed*



*8-foot scaffold installed from approach side*



# Additional Photos, Elements & Configs: LOL-10 A-frame



**ATLAS DEVICES**

HIGHER, FASTER, SAFER





*LOL-10-UL-S and LOL-15-S with backpack straps*



*LOL-10 deployed*

# Specs-LOL-10-UL, 10-UL-S (Ultralight)



**ATLAS DEVICES**

HIGHER, FASTER, SAFER

## LOL-10-UL

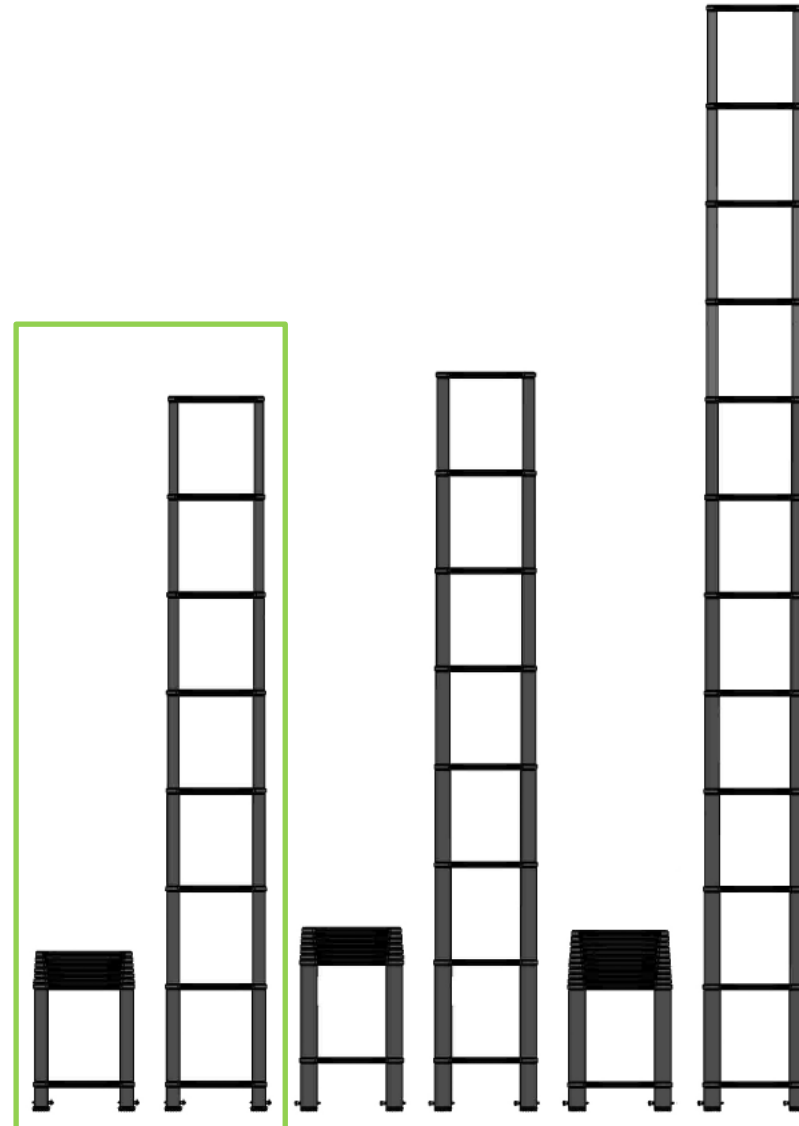
### Physical Specifications:

- **Material:** Carbon Fiber (Standard Modulus)
- **Weight:** 8.5lb / 3.9kg
- **Size, collapsed:** 30x16.8x2.8in / 762x426x71mm
- **Size, deployed:** 116.7x16.8x2.8in / 2964x426x71mm
- **WLL :** 350lb / 158kg
- **Length, Max :** 10ft / 3m

## LOL-10-UL-S

### Physical Specifications:

- **Material :** Carbon Fiber (High Modulus)
- **Weight:** 8.5lb / 3.9kg
- **Size, collapsed:** 30x16.8x2.8in / 762x426x71mm
- **Size, deployed:** 116.7x16.8x2.8in / 2964x426x71mm
- **WLL :** 350lb / 158kg
- **Length, Max :** 10ft / 3m





## LOL-10

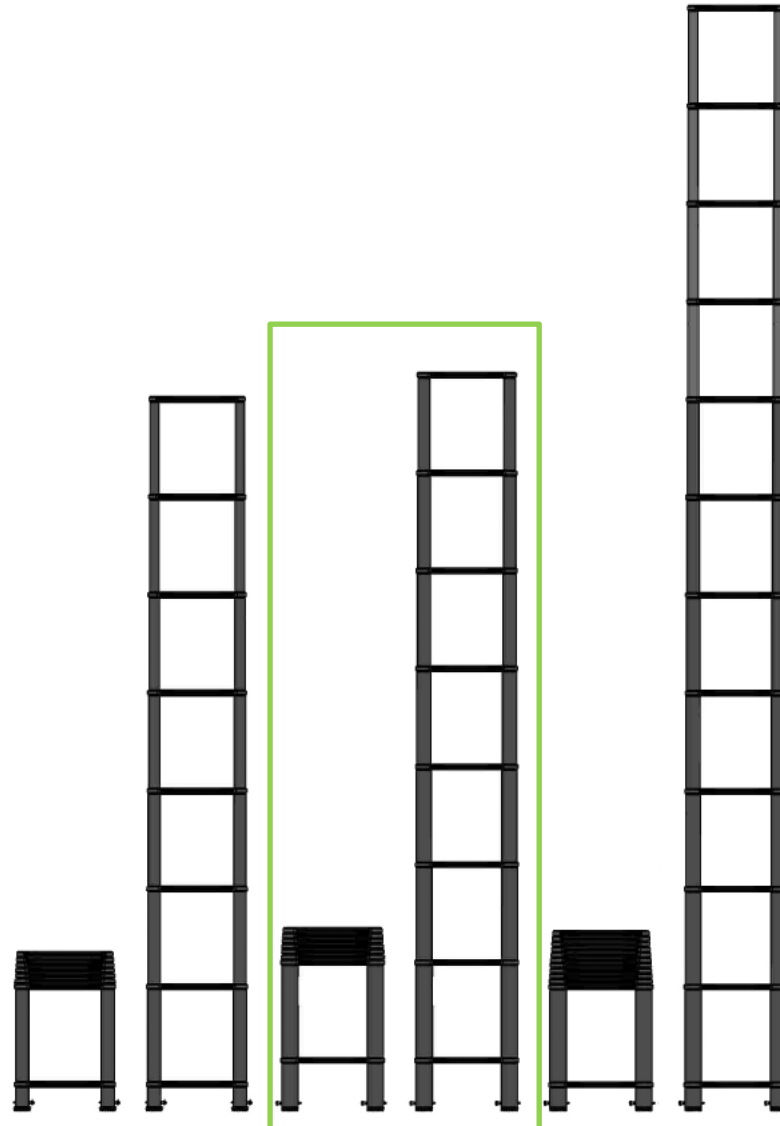
### Physical Specifications:

- **Material:** Carbon Fiber (Standard Modulus)
- **Weight:** 10.3lb / 4.6kg
- **Size, collapsed:** 30x17x3in / 762x431x76mm
- **Size, deployed:** 120.7x17x3in / 3065x431x76mm
- **WLL :** 350lb / 158kg (Lean-To)
- **Length, Max :** 20.1ft / 6.1m [2 ladders joined]

## LOL-10-S

### Physical Specifications:

- **Material:** Carbon Fiber (High Modulus)
- **Weight:** 10.3lb / 4.6kg
- **Size, collapsed:** 30x17x3in / 762x431x76mm
- **Size, deployed:** 120.7x17x3in / 3065x431x76mm
- **WLL :** 350lb / 158kg (Lean-To)
- **Length, Max :** 20.1ft / 6.1m [2 ladders joined]





# Specs-LOL-15, 15-S



**ATLAS DEVICES**

HIGHER, FASTER, SAFER

## LOL-15

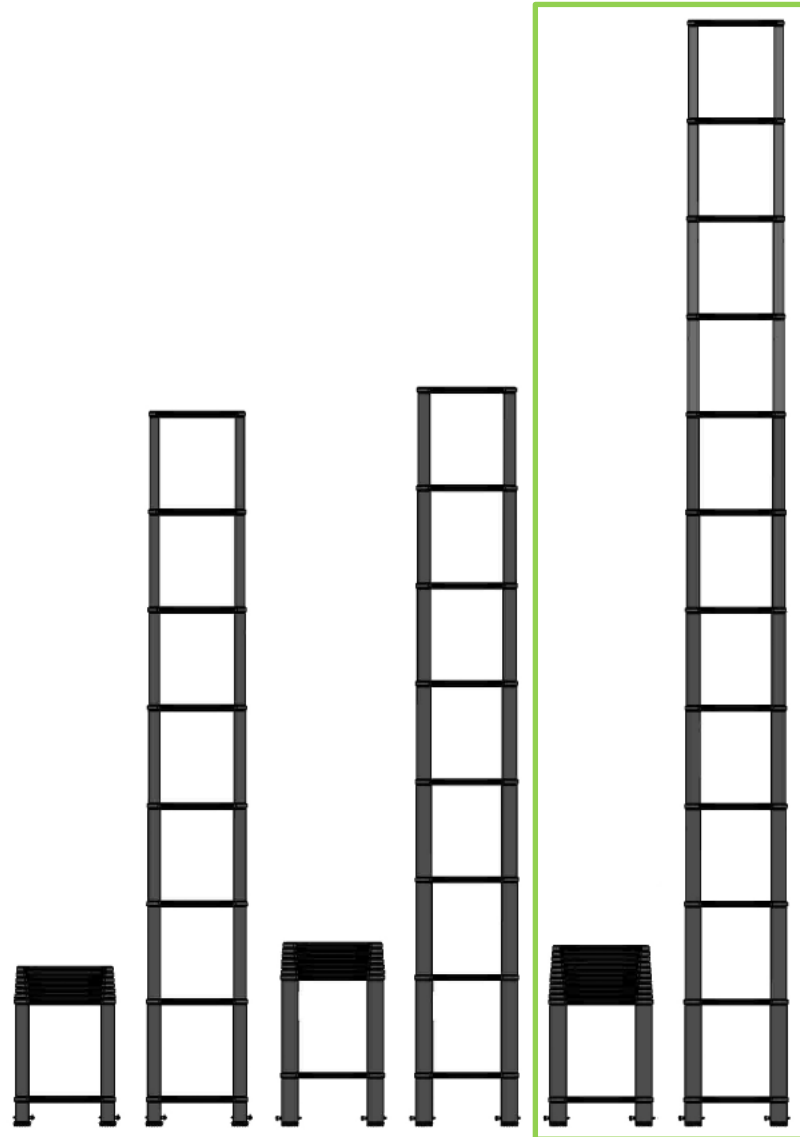
### Physical Specifications:

- **Material:** Carbon Fiber (Standard Modulus)
- **Weight:** 14lb / 6.3kg
- **Size, collapsed:** 30x17x3in / 762x431x76mm
- **Size, deployed:** 180.7x17x3in / 4589x431x76mm
- **WLL :** 350lb / 158kg (Lean-To)
- **Length, Max :** 20.1ft / 6.1m [2 ladders joined]

## LOL-15-S

### Physical Specifications:

- **Material:** Carbon Fiber (High Modulus)
- **Weight:** 14lb / 6.3kg
- **Size, collapsed:** 30x17x3in / 762x431x76mm
- **Size, deployed:** 180.7x17x3in / 4589x431x76mm
- **WLL :** 350lb / 158kg (Lean-To)
- **Length, Max :** 20.1ft / 6.1m [2 ladders joined]



# Parts List

<b>Category</b>	<b>Vertical</b>	<b>Atlas PN</b>	<b>Description</b>
Ladder	Tactical	14369	LOL-10-UL 10ft Ultralight Telescopic Ladder (ladder)
Ladder	Tactical	14367	LOL-10-S 10ft Telescopic Ladder-HM (ladder)
Ladder	Tactical	14370	LOL-10 Telescopic Ladder 10ft (ladder)
Ladder	Tactical	14368	LOL-15-S 15ft Telescopic Ladder-HM (ladder)
Ladder	Tactical	14371	LOL-15--15ft Telescopic Ladder (ladder)
Ladder	Tactical	16166	LOL-JOIN-ADP-PAW-EA (adapter)
Ladder	Tactical	15967	LOL-JOIN-ADP-SET-4PCS (joining adapter)
Ladder	Tactical	15972	LOL-End Caps-PAIR (caps)
Ladder	Tactical	16098	LOL-ADP-TAC-EA (adapter)
Ladder	Tactical	16099	LOL-ADP-TAC-PAIR (adapter)
Ladder	Tactical	16163	LOL-SCAFFOLD-SXN (ladder section)
Ladder	Tactical	16164	LOL-SCAFFOLD-PLATFORM (ladder)
Ladder	Tactical	16165	LOL-CFI-EA (footer)
Ladder	Tactical	15958	LOL-CFI-PAIR (footers)

## Atlas Devices, LLC

[www.atlasdevices.com](http://www.atlasdevices.com)

21 Alpha Rd. Suite 202  
Chelmsford, MA 01824

+1.617.415.1657

[outsidesales@atlasdevices.com](mailto:outsidesales@atlasdevices.com)

