



DOOR RAIDER light B
high performance hydraulic door-opener

technical data sheet

LIBERVIT
manufacturer



LIBERVIT
BLACKline

for Police & Gendarmerie
special forces

LIBERVIT
DÉFENSE

for military forces

From a general point of view, even the highest performance equipment will not by itself solution all the situations.

It does not completely cancel the risk encountered by the special units' users on an operation.

As a manufacturer we OWE to ourselves and to the users to give priority to quality, reliability, performance and innovations.

We will never be confronted to front line situations but you on the other hand are facing them daily in France or elsewhere around the world and sometime while using one of our tools.

It is at this very moment that our choice of components, raw material to manufacture the tools that you are using, at this very moment when you are about to give the "GO ahead" that the equipment must prove itself failproof!

Internationally, France benefits from a strong reputation in the fields of security at the operational knowhow level as much as in the equipment manufacturing.

At LIBERVIT, we are experienced technicians, our professional ethic is unwavering and above all we know and respect those using our products and because of this close relationship we have considered their insights and suggestions in the making of our tools.

We pride ourselves in manufacturing French. All the labelled equipment that you had, have or will have in your hands, are made in France with more than 90% of components and raw materials of French origin or from close European Union countries such as Germany, Norway and Italy.

Our 25 years in the design and manufacturing of hydraulic and mechanical tools with land and water applications for the army and police special forces, our seriousness, our professionalism, and our never ended search for innovations has made us a key player within these professional environments.

LIBERVIT is represented in over 60 countries through our specialized Distributors network offering commercial advice, demos, maintenance and after sale service.

All of the LIBERVIT team and myself are available to ensure that none of your question remains unanswered.

We wish you a pleasant read.

Yvan CARDONA, CEO

Quality & Reliability

LIBERVIT will provide, for a minimum of 10 years after delivery, any of its tools' spare parts.
All our equipments comply with CE standard.

Unless otherwise specified by us, our equipments are guaranteed for 3 years from the dispatch date. The guarantee covers construction defects as well as material flaws noted by our services.

Our organization, from engineering to customers' service is ISO 9001 certified. It guarantees a high quality, life-long performance and complete reliability of our tools and equipment.

All our tools undergo rigorous test & control before shipment.





We would like to thank you for the trust you keep showing us every day. LIBERVIT has been and still is extremely proud of manufacturing high quality entry tools and to dedicate its resources to design, developing and sharing experiences with end users. It honours us to display your insignia in our long lasting relationship and it would honour us if you would consider sending us yours to appear in our next edition.

Communication service : communication@libervit.com



LIBERVIT has been developing hydraulic extrication tools for many years used by rescue organisations such as Firebrigades and the Civil Defense.

In September 1999, on their request and in collaboration with the RAID, we started a study, following a specifications logbook, on a hydraulic tool prototype for breaching metal doors.

In December of the same year the prototype that was to become the DOOR-RAIDER, was delivered to the RAID.

Throughout the year 2000 important modifications were made to the prototype as it was tested during training sessions, but also during operations. From a technical point of view the tool is a complete success.

What we were far from imagining was that this tool was to become for LIBERVIT a key to a new activity. A new activity that is today not only a commercial success a necessity for any company but also it has given us the opportunity to develop a complete range of products for all the Police task forces, the gendarmerie and the Army, thanks to the many requests we received.

We are extremely proud to offer our customers high-performance tools giving them the possibility to carry out their missions in the best possible conditions; as the Firebrigade, Police, Gendarmerie or Armed Forces are constantly facing danger, we need to help them in guaranteeing the best result from our equipment.

DOOR-RAIDER light B - high performance kit

The Door Raider light B standard version easily breach multipoint armoured doors opening inward and metal doors opening outward with the OptionT.

The door opening is progressive with no impact and silent regardless of the chosen mode: hand radio remote or the tool's service handle.

Setting it is quick, silent and simple and a single action opens high-resistance doors in less than 20 seconds. Rubber stoppers strategically placed on the VE70-L jack limit the noise risk during transport or commissioning.

The B.A.S. superlight power unit design is such that it can be transported and also used on the back to help navigate through tight areas while keeping the hands free.

A quick release system has been designed to quickly get rid of the B.A.S. superlight if needed.

The B.A.S. superlight feeds all of the LIBERVIT tools, it is fitted with a charge indicator signalling when to recharge or change the battery which can be removed manually.

For a maximum security in high risk situations when the door is rigged or in case of a shooter behind the door the DOOR RAIDER light B can be, once set, actioned from a distance. The command can be radio remote or wired, the radio remote range is of approximately 30 m and the wired range is of 3 m.

Three extensions complete the set. These will help through different situations such as steps before a door.

The upper bearing plate is manually removable.

The B.A.S. superlight and the VE70-L both have accessories available on option.



VE70-L - high performance hydraulic jack



The hydraulic jack door opener VE70-L opens heavy-armoured, inward-opening, multi-locks, wooden, PVC, metal doors or outward-opening metal doors when equipped with the optionT accessory.

Silent, quick and easy to use, a heavy-armoured door can be opened in less than 20 seconds.

The upper arm is equipped with a manually removable upper bearing plate (to set on the door upper frame unscrewing the 110 mm - 4.3 inch extension).

The VE70-L door opener's performance depends largely on the surface-adhesion of its lower plate tips. The lower & middle base plates are equipped with anti-slip crampons. Crampons are made from high resistance steel and can be sharpened. After each VE70-L door opener use, it is important to check the crampons' tips for wear and tear and to sharpen or change them if necessary. Use the mid base plate crampon(s) on the lower base plate if one of the crampon is blunt, or broken.

The SIG anti-noise sole keeps the noise level risk to its lowest helping a quieter door approach. The SIG sole is positioned manually on the VE70-L hydraulic jack door opener mid base plate, it cannot be fitted on the lower base plate.

The service handle can be used to activate the VE70-L jack when paired with a B.A.S. superlight or GHP hydraulic power unit but also with a LIBERVIT hydraulic manual pump.

With a power unit you can also activate your VE70-L via one of the remote controls.

Rubber stoppers, placed at strategic points along the tool reduce the noise risk during transportation and whilst operating.

On option, 3 jack's extensions are to be used for difficult access areas such as one or more steps in front of a door.

There are several different types of plates & extensions available on option.

(*tool not self-sufficient needs to be used with a LIBERVIT hydraulic power unit or manual pump)

B.A.S. superlight - hydraulic power unit



The B.A.S. superlight hydraulic power unit supplies all the tools in the LIBERVIT BLACKline and LIBERVIT DEFENSE ranges.

The B.A.S superlight power unit has been designed to be transported by hand, with a shoulder strap or on the back to ease transport in difficult access area and free the hands. A quick-release system has been integrated to discard the power unit when carried on the back.

A dashboard protected by a removable flap provides access to the start-up switch as well as to the battery charge status indicator.

A 1.5 meters hydraulic hose is permanently stored in a dedicated compartment, just open it to extract the hose. The B.A.S. hydraulic unit has a 48V LIBERVIT Lithium battery, giving an average autonomy of 120 minutes in tool action. The 100% recharge time for a fully discharged battery is 35 minutes. In order to protect the battery and increase autonomy, we have equipped the B.A.S. superlight hydraulic power unit with auto-shutdown technology, this technology allows the hydraulic power unit to automatically switch off after 4 hours of non-activity. You can disable the auto-shutdown through the LIBERVIT Connected application.

The hydraulic unit is supplied as standard with a hand remote control, wired / wireless convertible, usable at 3 m distance in wired configuration and at 30 m distance in wireless configuration.

The use of wired or radio remote control makes it possible, in the event of a trapped door or an armed assailant, to activate the hydraulic power unit while maintaining an essential safety distance.

The hand remote control has a battery charge status indicator. It has long-lasting rechargeable batterie and can be recharged by simply connecting the remote control to the hydraulic unit without requiring a main supply.

With the T360 technology developed by LIBERVIT, the B.A.S. superlight hydraulic unit can be used and stored in all positions, while retaining all of its performance.

To ease as much as possible our power unit preventive maintenance we have fitted them with a data transmission and reception system linked to a free application to be downloaded from the Google play and HUAWEL stores. Each user will be able to check and perform simple diagnosis from his mobil phone.

VE70-L- high performance hydraulic door-opener

the VE70-L hydraulic door-opener opens heavy-armoured, inward-opening, multi-locks, wooden, PVC, metal doors or outward-opening metal doors when equipped with the option T.



VE70-L



The VE70-L hydraulic door-opener opens heavy-armoured, inward-opening, multi-locks, wooden, PVC, metal doors or outward-opening metal doors when equipped with the option T. Silent, quick and easy to use, a heavy-armoured door can be opened in less than 20 seconds.

On the VE70-L hydraulic jack, the upper bearing plate is fitted with a manually removable plate.

The doors' opening is done progressively, without impact and in optimal silence whichever mode chosen: remote controlled or by actioning the control switch on the tool.

Rubber stoppers, placed at strategic points along the tool reduce the noise risk during transportation and whilst operating.

(*tool not self-sufficient needs to be used with a LIBERVIT hydraulic power unit or manual pump)



VE70-L - high performance jack

TECHNICAL CHARACTERISTICS

high performance hydraulic jack	ref. VE70-L
thrust	71 kN
hydraulic jack stroke	522 mm - 20.5 inch
hydraulic jack retracted	1130 mm - 44.5 inch
hydraulic jack deployed	1650 mm - 65 inch
upper support length	875 mm - 35 inch
deployed upper support length	1004 mm - 39.5 inch
upper support stroke length	129 mm - 5 inch
transport handle	yes
upper support plate	yes (removable)
door & ground plate support crampons	yes (removable)
door & ground anti-noise plate sole	yes (removable)
available colours	dark grey, black or olive green
VE70-L dimensions (storage position)	1130 x 300 x 135 mm - 45 x 12 x 5 inch
VE70-L weight	16 kg -35 lbs





upper support plate



door & ground
anti-noise plate
with SGI sole

carbon upper support



locking button

hydraulic jack

service handle

hose coupling

door & ground bearing plate
with crampons resharpenable

jack's service handle
instructions symbols



All these doors were opened in less than 20 seconds !

Trials carried out on different high-resistance doors:

- > Fichet G375 - French 12-locks door, classed level 5 (maximum rating), in compliance with NF P 20.320 standard.
- > Fichet Forstyl HiS A2P BPI - A2P3 ★★ - 5 locking points.
- > Sherlock F730 23 locks Class 4.
- > Sherlock CGU - Czechoslovakian 5-locks door, TUV Class E130 D3 / EW45 D3 standard.
- > Daloc S43 - Swedish 3-locks door, ranked class 3, level 40 in compliance with SS.ENV 1627 & 00-943 certification.

VE70-L/KIT high performance door-opener and accessories

TECHNICAL CHARACTERISTICS		
VE70-L hydraulic jack set	ref. VE70-L/KIT	
high performance hydraulic door-opener	ref. VE70-L	
thrust	71 kN	
hydraulic jack stroke	522 mm - 20.5 inch	
hydraulic jack retracted	1130 mm - 44.5 inch	
hydraulic jack deployed	1650 mm - 65 inch	
upper support length	875 mm - 35 inch	
deployed upper support length	1004 mm - 39.5 inch	
upper support stroke length	129 mm - 5 inch	
transport handle	yes	
upper support plate	yes (removable)	
door & ground plate support crampons	yes (removable)	
door & ground anti-noise plate sole	yes (removable)	
available colours	dark grey or olive green	
VE70-L dimensions (storage position)	1130 x 300 x 135 mm - 45 x 12 x 5 inch	
VE70-L weight	16 kg - 35 lbs	
150 mm extension	ref. R150	
length	L 150 mm - 6 inch	
weight	1 kg - 2 lbs	
300 mm extension	ref. R300	
length	300 mm - 12 inch	
weight	1.8 kg - 4 lbs	
450 mm extension	ref. R450	
length	450 mm - 18 inch	
weight	2.5 kg - 5.5 lbs	
PELICASE® transport case	ref. VDT2 (LIBERVIT BLACKline)	réf. VLD2 (LIBERVIT DEFENSE)
available colours	black	olive green
silica gel cartridge	qty 1, used to prevent humidity	qty 1, used to prevent humidity
case dimensions	1350 x 405 x 170 mm - 53 x 16 x 7 inch	1366 x 419 x 170 mm - 53 x 16 x 7 inch
weight empty	10.7 kg - 23.5 lbs	10.5 kg - 23 lbs
case weight loaded	32 kg - 70.5 lbs	31.8 kg - 70 lbs



in the transport case
a silica gel cartridge
(used to prevent humidity)

VE70-L/KIT high performance door-opener and accessories



VE70-L hydraulic jack door opener

extension ref. R150



extension ref. R300



extension ref. R450



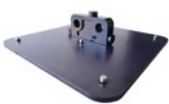
VDT2 PELICASE® transport case (LIBERVIT BLACKline)

VE70-L jack's accessories



R150 extension
R300 extension
R450 extension

ref. R150, L 150 mm - 6 inch - weight : 1 kg - 2 lbs
ref. R300, L 300 mm - 12 inch - weight : 1.8 kg - 4 lbs
ref. R450, L 450 mm - 18 inch - weight : 2.5 kg - 5.5 lbs



SGS1 small plate
anti-slip crampons
dimensions
weight

ref. SGS1
qty 6
300 x 300 x 8 mm - 12 x 12 x 0.5 inch
6.4 kg - 14 lbs



SGS2 large plate
anti-slip crampons
dimensions
weight

ref. SGS2
qty 6
450 x 450 x 8 mm - 18 x 18 x 0.5 inch
13.5 kg - 30 lbs



OMEGA anti-slip hooked bearing plate
dimensions
weight
VE70-L jack adaptable

ref. OMEGA
70 x 75 x 64 mm - 2.7 x 3 x 2.5 inch
765 g - 1.6 lbs
from July 2010



ASC/594 short upper support
retracted ASC/594 upper support total length
deployed ASC/594 upper support total length
retracted VE70-L upper support total length
deployed VE70-L upper support total length
ASC/594 & VE70-L upper support length difference
material
total length
weight
VE70-L jack adaptable

ref. ASC/594
749 mm - 30 inch
878 mm - 34.5 inch
875 mm - 34.5 inch
1004 mm - 39.5 inch
126 mm - 5 inch plus court
carbone fiber
749 x 131 x 55 mm - 29.5 x 5 x 2 inch
3.2 kg - 7 lbs
from July 2010



KIT/ASO accessories in Pelicase @
includes:
short upper support
flange axis
short plate
anti-slip hooked bearing plate
PELICASE @ transport case
silica gel cartridge
case dimensions
weight empty

ref. KIT/ASO

ref. ASC/594
ref. VE70-L/EU-019
ref. SGS1
ref. OMEGA
ref. VDT/ASO
qty 1, used to prevent humidity
960 x 430 x 160 mm - 4 x 1.5 x 6 inch
7.9 kg - 4 lbs



VHR70 - HR7 plate adaptator for VE70-L
dimensions
weight
material
adaptable on VE70-L jack
delivered in solid transport case

ref. VHR70
83.5 x 74.7 x 72 mm - 3.2 x 2.9 x 2.8 inch
422 g 10- lbs
black powder coated aluminium alloy
from june 2010
yes

VE70-L jack's accessories



optionT bearing point for outward opening metal doors

reference	optionT
hit pad	yes
dimensions	284 x 120 mm - 11 x 5 inch
weight	3.2 kg - 7 lbs
VE70-L jack adaptable	from July 2010
delivered in solid transport case	yes



SIG anti-noise sole

reference	ref. SIG
dimensions	148 x 118 x 10 mm - 5 x 4 x 0.3 inch
weight	250 g - 9 oz
available colours	dark grey or olive green
delivered by	ref. SIG/5



THORN perforating spur

reference	ref. THORN
dimensions	149 x 120 x 103 mm - 6 x 5 x 4 inch
weight	1.8 kg - 4 lbs
VE70-L jack adaptable	from July 2010
delivered in solid transport case	yes



VE70-L/C crampons

reference	ref. VE70-L/C
crampon dimensions	Ø 148 x 22 mm - Ø 6 x 0.8 inch
crampon weight	9 g - 0.3 oz
circlips & crampons	qty 4 per bag



sharpening station

reference	ref. TOURET/VE70/EU-D15
turntable supply voltage	220 Volts
grinding wheel dimensions	Ø 150 x 20 x 32 mm - Ø 6 x 0.8 x 1.5 inch
station dimension	350 x 280 x 230 mm - 14 x 11 x 9 inch
weight	10.95 kg - 24 lbs



transport bag

reference	ref. ST/VE70-L
dimensions	1150 x 350 x 150 mm - 45 x 14 x 6 inch
empty bag weight	1.5 kg - 3 lbs



PELICASE[®] transport case

LIBERVIT BLACKline colour	ref. VDT2 (LIBERVIT BLACKline)
dimensions	black
weight empty	1346 x 406 x 1555 mm - 53 x 16 x 6 inch
	11 kg - 25.5 lbs

PELICASE[®] transport case

LIBERVIT Defense colour	ref. VLD2 (LIBERVIT DEFENSE)
dimensions	olive green
weight empty	1366 x 419 x 170 mm - 54 x 16.5 x 6.5 inch
	10.5 kg - 23 lbs





B.A.S. superlight – hydraulic power unit

power supply all the LIBERVIT hydraulic tools from the LIBERVIT BLACKline and LIBERVIT DEFENSE ranges.



B.A.S. superlight



Compact, light and silent the B.A.S. hydraulic unit power supplies all the LIBERVIT hydraulic tools from the LIBERVIT BLACKline and LIBERVIT DEFENSE ranges.

Transportable on the back, with a shoulder strap or by hand you will be able to evolve in difficult access area while keeping your hands free.

A dashboard protected by a removable flap provides access to the start-up switch as well as to the battery charge status indicator.

The B.A.S hydraulic power unit has an integrated 1.5 m hydraulic hose and a 48V lithium battery offering 120 minutes of working time to a tool.

Functions and accessories within the next pages.



B.A.S. superlight hydraulic power unit

TECHNICAL CHARACTERISTICS

hydraulic power unit	ref. B.A.S. superlight
service pressure	300 bar
oil tank capacity	1.24 L - 42 fl oz
outer-shell	Cordura® soft shell (1100 Den)
closing	YKK® water repellent zipper
IP index	IP64
shoulder and chest straps buckles	x3 emergency release buckles
available colours	dark grey or olive green or camouflage
carrying means	back / handheld / shoulder strap
molle® system	yes
left side removable pocket	qty 1, ref. PA1/BSL
lifting ring	at the unit back to lift, air lift, lever, hang
use & storage	T360° multi-position technology
integrated hydraulic hose	1.50 m - 5 ft
hydraulic hose casing	yes
decibels	48 dB*
power supply	qty 1, LIBERVIT 48 V Lithium battery, ref. BI-ION48
autonomy	120 minutes of tool action**
battery removal	manually
battery maximum charging time	35 min (100% charge)
battery charge indicator	yes
auto-shutdown	yes, after 4 hours non-use (auto-shutdown adjustable & can be disabled)
LIBERVIT automatic charger	qty 1, ref. CB-ION48
convertible hand radio remote	qty 1, with molle® system sleeve
power supply cable length	3 m - 10 ft
radio remote range	30 m - 99 ft
connected unit	LIBERVIT Connected app on Google Play & Huawei store (deactivatable Bluetooth)
dimensions	280 x 230 x 390 mm - 11 x 9 x 15.5 inch
weight	11 kg - 24 lbs***

* test done at a 5 m distance

** test done at a 150 bar average pressure

*** ready to use without portage means

ACCESSORIES

interactive radio remote wristband	on option, ref. BRI
cross body shoulder strap	on option, ref. BAS/EPM
peripherals transport bag	on option, ref. STP/BSL
extreme conditions sleeve	on option, ref. HCE/BSL
spare removable pocket	on option, right side (R) : ref. PA2/BSL
spare lithium battery	on option, ref. BI-ION48
magnetic kit	on option, ref. KM/BSL
hook kit	on option, ref. KC/BSL
transport bag	on option, ref. VDT/BSL

On option, the B.A.S. superlight unit, its charger and radio remote can be packed in a solid case.

PELICASE® transport case	ref. VDT/BSL (LIBERVIT BLACKline)	ref. VLD/BSL (LIBERVIT Défense)
available colours	black	olive green
telescopic handle	yes	yes
wheels	yes	yes
dimensions	630 x 510 x 300 mm - 25 x 20 x 12 inch	795 x 518 x 310 mm - 31 x 20 x 12 inch
weight empty	10.5 kg - 23 lbs	13 kg - 28 lbs
case loaded	24.5 kg - 54 lbs	27 kg - 59 lbs

B.A.S. superlight hydraulic power unit can supply :

The B.A.S. superlight hydraulic power unit supplies all the tools from the LIBERVIT BLACKline and LIBERVIT DEFENSE ranges. We designed this unit with in mind the fact that we wanted it to power supply all our latest tools but also all the LIBERVIT tools manufactured these last 20 years.



spreaders



cutters



jacks



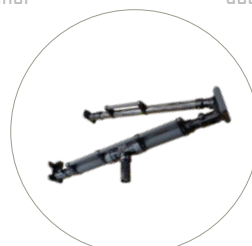
EX50 door opener



OP series
door opener



mid range HR7
door opener



VE70-L
high performance
door opener

LIBERVIT

TECHNICAL DATAS



A dashboard protected by a removable flap provides access to the start-up switch as well as to the battery charge status indicator.



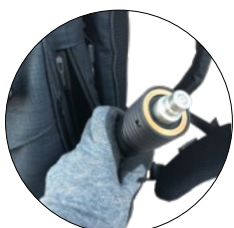
The B.A.S. hydraulic power unit has a 48V lithium battery, giving an average autonomy of 120 minutes in tool action.



The hydraulic power unit is supplied as standard with a hand remote control, wired / wireless convertible, usable at 3 m distance in wired configuration and at 30m distance in wireless configuration.



The use of wired or radio remote control makes it possible, in the event of a trapped door or an armed assailant, to activate the hydraulic power unit while maintaining an essential safety distance. The remote control has a battery charge status indicator. They have long-lasting rechargeable batteries and can be recharged by simply connecting the remote control to the hydraulic unit without requiring a mains supply.



A 1.5 meters hydraulic hose is permanently stored in a dedicated compartment, just open it to extract the hose. The compartment has 2 openings giving you the choice to extract it from left or right.



To protect the battery and increase its autonomy we have fitted the B.A.S superlight unit with an auto-shutdown technology. The auto-shutdown kicks in after 4 hours of non-use. The auto-shutdown can be disabled through the LIBERVIT app and it can be set to a 1 to 8 hours period.



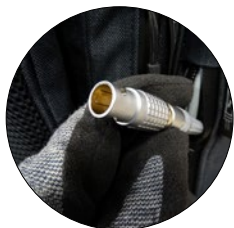
With the T360 technology developed by LIBERVIT, the B.A.S. superlight hydraulic power unit can be used and stored in all positions, while retaining all of its performance.



Removable and washable the B.A.S superlight hydraulic power unit' outer shell is made of multi-layered padded Cordura (1100 Den) and is IP64. It is also fitted with water-repellent zippers and anti-noise partitions.



Foldable a lifting ring at the back of the unit offers a 100% reliable anchor point to lift, air lift and hang..



The integrated wire charges: the lithium battery via the charger as well as the remote-control battery.



The B.A.S superlight hydraulic power unit does not exceed the 45 dB at 5 m.




The LIBERVIT connected application available on the Google Play & Huawei stores will enable you to diagnose your hydraulic power unit and will also indicate: the battery charge status, the number of charges / discharges already done, the oil level, the engine running status, the radio remotes functioning as well as the battery charger, the tool's effort produced and many more useful information.

BI-ION 48 battery's ballistic tests report for operators' safety



As we aim to provide quality and safety for our users, we've conducted some ballistic impacts tests on our LIBERVIT B.A.S. superlight powered by a Lithium battery ref: BI-ION48. This exhaustive report will give you information on the pros & cons of our batteries. We will keep working hard to improve our equipment and maintain the quality you already know as well as increasing as much as possible our users' safety.

Ballistic impacts tests executed with the arms and calibers listed below:



HK G36
Fusil automatique

223 Remington
Cal. 5.56 OTAN



HK 417
Fusil automatique

308 Winchester
Cal. 7.62 OTAN

OBJECTIVE :

Point out potentially dangerous risks, momentary and/or persistent: (explosion/projection/flammable).

TESTS :

1- Automatic rifle HK417: cal 7.62 OTAN, 308 Winchester, 50 m/164 ft shot :

Instant reaction: white smoke, sparks.

Delayed reaction: after +/- 15 mn, no flame, no flow.

Battery visual aspect: perforated from side to side.

2- Automatic rifle M4: cal 5.56 OTAN, 223 Remington, 50 m/164 ft shot :

Instant reaction: white smoke, no sparks.

Delayed reaction: after +/- 15 mn, no flame, no flow.

Battery visual aspect: perforated from side to side.

3- automatic rifle HK G36: cal 5.56 OTAN, 223 Remington and HK417: cal 7.62 OTAN, 308 Winchester 5 m shot:

Instant reaction: white smoke, no sparks.

Delayed reaction: after +/- 15mn. : no flame, no flow

Battery visual aspect: perforated from side to side



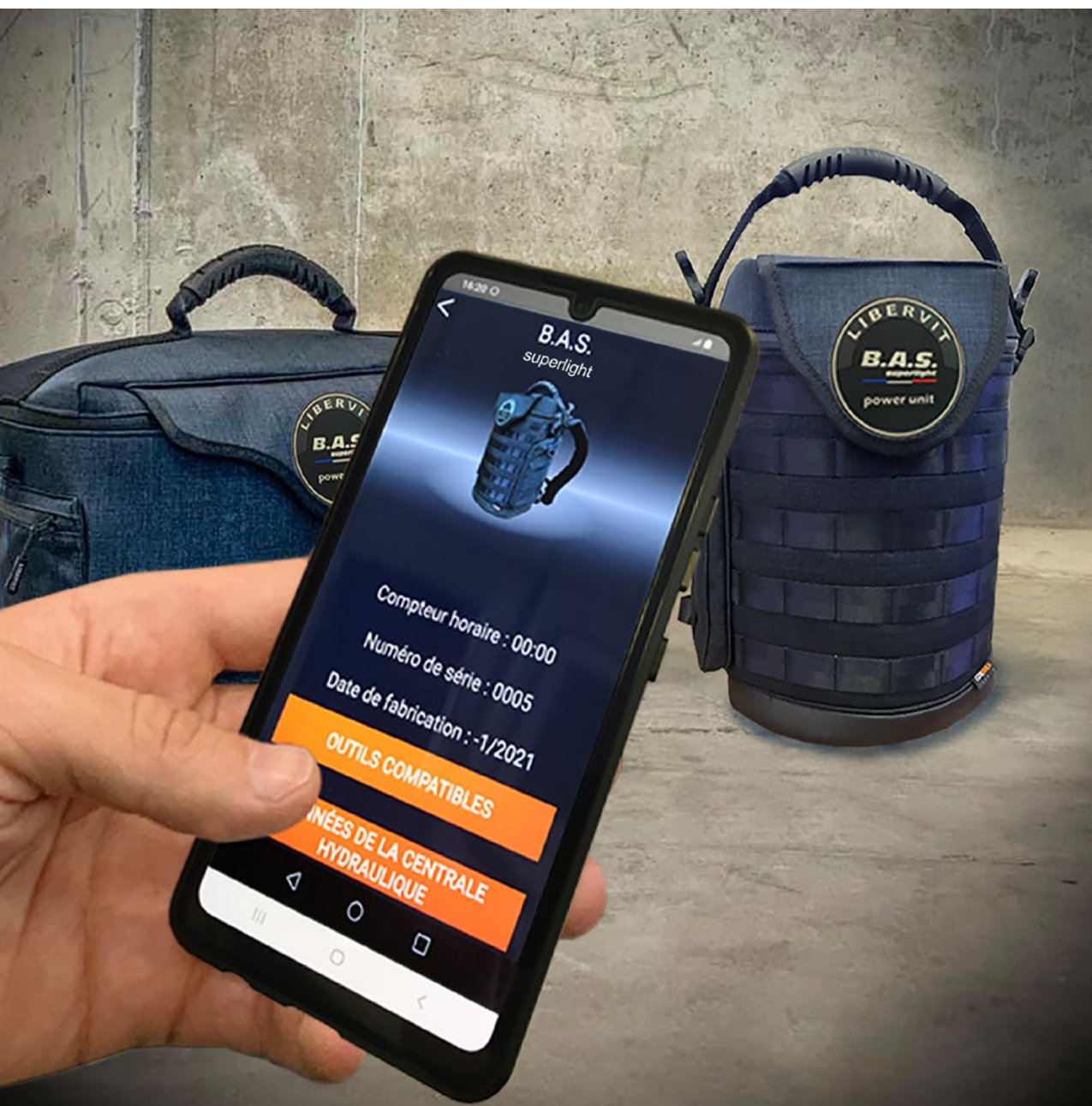
CONCLUSION :

The different ballistic tests executed gave us the opportunity to find out the damages and their consequences done to a LIBERVIT BI-ION48 battery when shot at. All the batteries have been perforated from side to side generating white smoke but no flame and no flow and no explosion has been witnessed.

THE USE OF LIBERVIT POWER UNITS IS EXPLOSION AND BURST RISK FREE UNLIKE EQUIPMENTS USING AIR COMPRESSED BOTTLES.

LIBERVIT Connected

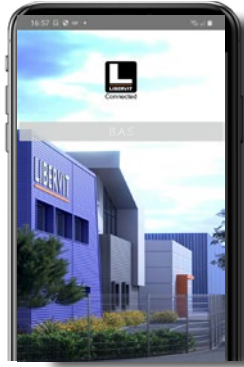
complete hydraulic power unit diagnosis via the LIBERVIT connected app.





Bluetooth

LIBERVIT Connected



To ease as much as possible our units' preventive maintenance, the B.A.S. superlight unit is delivered in series with a receiving and transmitting data system that all users can access on their smart phone to perform a complete diagnosis of their equipment. The Application LIBERVIT connected can be downloaded from the Google or Huawei store.

- The diagnostic indicates:
- The battery charge status
- The hydraulic oil level
- The engine condition
- The hydraulic pressure
- The radio remotes condition
- The battery charger condition
- The tool's effort (in use with the unit)
- And much more

You will be able to send an email directly from your phone to our technical department with the diagnosis. Our technicians will be able to read the data and act accordingly if a maintenance or repair is needed and help you if it is possible through our Hotline.

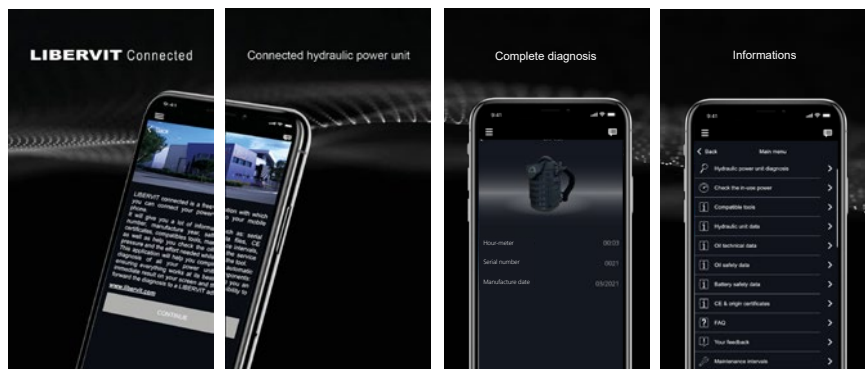


> AFTER SALES SERVICE : aftersales@libervit.com



AFTER-SALES
TOLL FREE

0 805 385 123







INTERACTIVE RADIO REMOTE WRISTBAND

on option, the interactive radio remote wristband activates the B.A.S. superlight hydraulic power unit from a distance.





BRI

The interactive radio remote wristband activates the B.A.S.superlight hydraulic power unit from a distance (maximum range: 30 m). the tool's effort in action in real time is also visible on the screen.

Its waterproof (IP64) touch screen indicates the radio signal, the battery level (10h autonomy in use) , the date and time. The wristband also benefits from a red LED (added light – ON or OFF) and a USB-C port to charge it.

You can check whether the auto-shutdown is activated or not.

Activate or disable the auto-shutdown from the LIBERVIT Connected App.

TECHNICAL CHARACTERISTICS

Interactive radio remote wristband	ref. BRI
Radio communication :	works with LIBERVIT B.A.S. & B.A.S. superlight power units a range of 30 m
datas :	real time tool's effort in % radio signal level battery level (BRI + BAS superlight) ASD (unit Auto-shutdown) activated / disabled hours/ date
functions :	unit activation visualization of the tool's power used in % red LED (ON/OFF) USB-C port to charge the BRI
screen lighting	high and low screen brightness
battery	LiPo 3.7 V - autonomie 10h
waterproof	yes, IP64
wristband	50mm adjustable strap with Velcro
dimensions	90 x 30 mm - 3.5 x 1 inch
weight	80 g - 3 oz

B.A.S. superlight power unit's accessories

on option are available some accessories for the B.A.S. superlight





CROSS BODY SHOULDER STRAP

Ref: BAS/EPM

The cross body shoulder strap fits on the power unit in place of the shoulder pads with safety buckle for quick ejection and a securing harness for light door openers (available colours : dark grey or olive green or camouflage).



RIGHT SIDE REMOVABLE POCKET

Ref: PAZ/BSL

Right spare side removable pocket to fit on the B.A.S. superlight power unit body (available colours : dark grey or olive green or camouflage).



PERIPHERALS TRANSPORT BAG

Ref: STP/BSL

The B.A.S. superlight peripherals can be protected and stored in a transport bag: handle, shoulder straps, strap, backrest, battery charger, radio remotes and an extra battery (available colours : dark grey or olive green or camouflage).



MAGNETIC KIT

Ref: KM/BSL

With the magnetic kit you can free yourself from the unit weight and plate it against any metallic surface.



HOOK KIT

Ref: KC/BSL

To hang the B.A.S. superlight unit when it cannot be left on the floor.



EXTREME CONDITION SLEEVE

Ref: HCE/BSL

It will protect your B.A.S. superlight unit from extreme weather conditions such as heavy rain, sandstorm, etc delivered in a pouch adaptable on the molle system or by carabiner.



PELICASE® TRANSPORT CASE

Ref: VDT/BSL (LIBERVIT BLACKline) or ref: VDT/BSL (LIBERVIT Défense)

(available colours : black or olive green)

The B.A.S. superlight unit, its battery charger and the radio remotes can be packed in a in a waterproof case. The VDT/BAS is fitted with a high density black foam in which an imprint of the tool has been made to keep it secure during transport or storage.

We use the PELICASE® brand for its quality and reliability. Our cases all meet the military and air transport norms, have wheels and a foldable handle.



> **QUOTATIONS** : quotations@libervit.com



> **ORDERS** : orders@libervit.com



> **AFTER SALES SERVICE** : aftersales@libervit.com



libervit.com



gallery-libervit.com

We have tried to be as thorough as possible in the making of this document. However, some information might be incomplete or incorrect. LIBERVIT SAS cannot in anyway be held responsible for any of the consequences these errors could have.

If in doubt about some of the information rightness please contact our communication service through e-mail: communication@libervit.com

This document cannot be reproduce in part or entirely, be edited or distributed to the public without an authorization from LIBERVIT.

LIBERVIT - Espace Polygone - 218 rue Ettore Bugatti - 66000 Perpignan - FRANCE
Phone : +33 (0)4 68 50 05 25 - Fax : +33 (0)4 68 66 98 97 - courrier@libervit.com
www.libervit.com

