

# REBS®



## USER MANUAL

### Poleman Hip Harness

Document number: **M000438**  
Revision: **-1**  
Release date: **2017-11-08**

**HENRIKSEN**

**Revision history**

<b>Rev.</b>	<b>Pages</b>	<b>Description</b>	<b>Approved by</b>	<b>Date</b>
--	All	First release	HH	2017-06-27
-1	10-12	More details for the pole wrap strap setup	IF	2017-11-08

## Table of Contents

<b>1 INTRODUCTION .....</b>	<b>4</b>
<b>2 ATTENTION!.....</b>	<b>4</b>
<b>3 TECHNICAL DATA .....</b>	<b>5</b>
3.1 Description.....	5
3.2 Construction and part overview .....	5
<b>4 OPERATION .....</b>	<b>6</b>
4.1 Preparation.....	6
4.2 Setup and fitting.....	7
4.3 Emergency release .....	12
<b>5 INSPECTION AND MAINTENANCE .....</b>	<b>15</b>
5.1 General care.....	15
5.2 Inspection .....	15
5.3 Cleaning.....	16
5.4 Replacement.....	16
5.5 Storage.....	16
<b>6 SPARE PARTS .....</b>	<b>17</b>
<b>7 INSPECTION LOG .....</b>	<b>18</b>

## **1 INTRODUCTION**

This use- and maintenance manual for this REBS Product is prepared by the manufacturer to provide necessary information about the use and maintenance.

This REBS Product is produced by H. Henriksen AS, in accordance with the highest standards. The company and its representatives provides service and training to make sure that your product has a safe and long life. We are all committed to "Reducing Operational Risk".

## **2 ATTENTION!**

This manual and its content should be integrated into formats and systems that your professional unit use. The content of this manual will be given out (in pdf or word) for free if you contact H. Henriksen AS.

Units using this REBS product must do a risk evaluation of the use of the REBS product. Operational scenarios with corresponding risk evaluations must be well known for the operators.

Any tampering or modification to the product without the proper authorization from the manufacturer may reduce performance and is done at the sole risk of user/owner.

Incorrect use of the REBS Product may cause serious harm or maybe death.

## 3 TECHNICAL DATA

### 3.1 Description

The poleman hip harness is designed to provide stable operational position for the poleman with a pole under boarding operations in maritime environments.

### 3.2 Construction and part overview

The harness is an assembly of straps, buckles and carabiners.

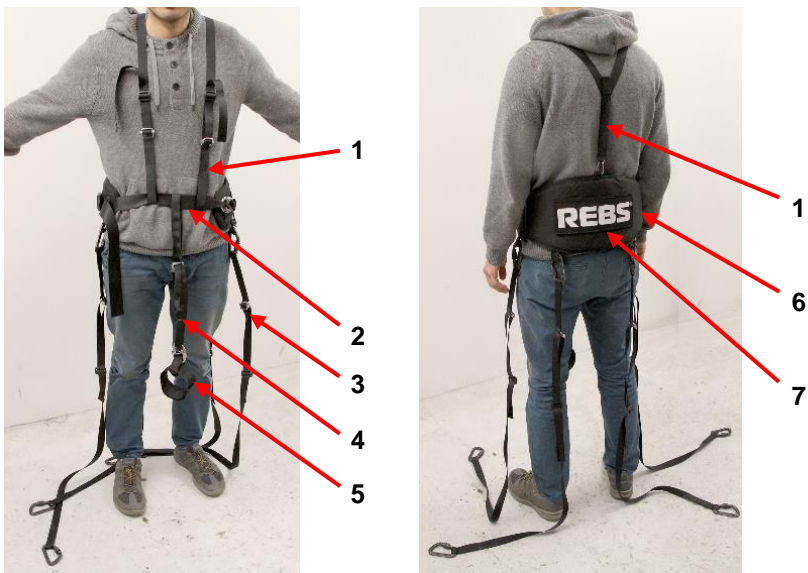


Figure 1: Part overview

1	Y-strap with carabiner	5	Pole wrap belt
2	Waist belt strap	6	Waist belt
3	Poleman harness straps	7	REBS velcro sticker
4	Pole strap		

## **4 OPERATION**

### **4.1 Preparation**

#### **4.1.1 Training**

It is the responsibility of the user and the purchaser of this equipment to assure that they are familiar with these instructions, trained in the correct care and use of, and are aware of the operating characteristics, application limits, and the consequences of improper use of this equipment.

#### **4.1.2 Planning**

Plan your system before use. Consider all factors that will affect your safety during the use of this equipment:

- Select proper anchorage points
- Avoid system components contacted with or abrade against unprotected sharp edges
- The user(s) must have a quick and safe rescue plan when using this equipment
- The user(s) must have the ability to perform a rescue quickly and safely.

#### **4.1.3 Inspection**

Before each use inspect the harness as described in chapter 5.2.1

## 4.2 Setup and fitting

### Important!

Do not alter or intentionally misuse this harness. Consult your distributor when using this equipment in combination with components other than those described in this manual. Some subsystem and component combinations may interfere with the operation of this equipment.

- Place the poleman harness with the waist belt (1) on your back and place the loops of the Y-strap (2) over your shoulder.
- Hold the loops of the Y-strap (2) in one hand and grab the quick release carabiner of the waist belt (3) with the other hand.



- Connect the waist belt by passing the quick release carabiner through the first loop of the Y-strap (1), the loop of the pole strap (2) and the second loop of the Y-strap (3).





- Connect the waist belt with the poleman harness straps (1) to the anchoring points of the platform by the carabiners (2).



- Adjust the harness to ensure correct sizing and comfort level. The left and right side of the Y-strap should be adjusted to the same length.

- Open the pole wrap strap.



- Make sure that the pole strap belt (1) is properly connected: the Velcro (2) is in the inside of the pole wrap strap (3).



- Attach the pole wrap strap (1) to the pole (2).



- Adjust the length of the pole strap with the bucket (1) to ensure the correct distance between the harness and the pole.



### **4.3 Emergency release**

#### **4.3.1 Emergency release of the pole strap**

Do the following in case you must release the pole strap in an emergency:

- Pull the ball on the quick release carabiner on the pole strap to open the carabiner and release the pole wrap belt (with the pole).



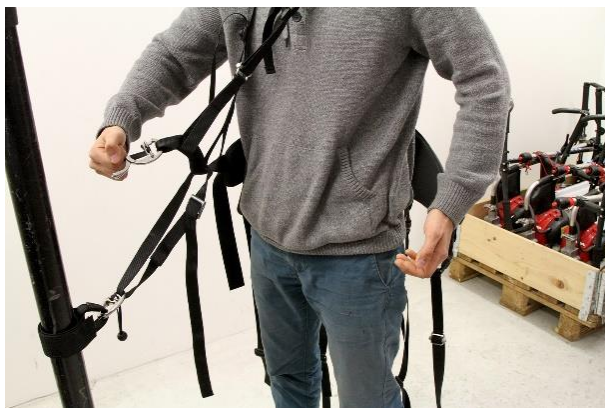
**4.3.2 Emergency release of the waist belt**

Do the following in case you must release the waist belt to take off the harness in an emergency:

- Pull the ball on the webbing of the quick release carabiner on the waist belt strap to open the carabiner, to release the waist belt and to open the harness.



- With the same movement, pull the harness off your body (bend ahead to make it easier) right after the carabiner released the waist belt.



## **5 INSPECTION AND MAINTENANCE**

### **5.1 General care**

It is very important that the harness is inspected and maintained periodically to ensure a safe and well-functioning equipment.

Careful maintenance will help to prolong the safe working of this product.

Avoid the following during operation, transport and storage:

- Abrasive rubbing and sharp edges
- Chemical contamination especially strong acids and alkali
- Prolonged exposure to ultra violet light e.g. sunlight

### **5.2 Inspection**

#### **5.2.1 Inspection before use**

##### **Important!**

Before each use visually inspect the product to ensure that it is in a operational condition. If you are in any doubt about the safe condition of the harness replace it immediately!

Check the last periodical inspection date in the inspection log and the lifespan of the harness.

**Lifespan:** 5 years form first use, 10 years from manufacture, whichever comes first.

#### **5.2.2 Function test**

- Do a suspension test on a safe place before operation.
- Do an emergency release test on the quick release carabiners at both the pole strap and the waist belt.

#### **5.2.3 Inspection after use**

- Check visually the condition of the webbing and the stitching

### **5.2.4 Periodical inspection**

We recommend a thorough inspection at least every six months by a competent person. This inspection should be logged.

The following points should be inspected:

- Condition of the webbing and stitching
- Presence of wear, cuts, fraying, melting, threads, ultra violet degradation, chemical contamination
- Buckle condition and operation
- Presence of deformation, cracks, roughness, corrosion.

### **5.3 Cleaning**

After use in a salty environment (seaside), rinse the harness with fresh water. If necessary wash the harness in warm soapy water (ph neutral, 30°C maximum), then rinse thoroughly with fresh tap water.

Do not use bleach or bleach solutions.

Do not use a high-pressure water sprayer.

After washing hang to air dry out of direct sunlight.

Do not force dry with heat.

### **5.4 Replacement**

#### **Warning!**

If you are in any doubt about the safe condition of the product or one of components, replace the complete harness immediately!

### **5.5 Storage**

Store the harness in a cool, dry, clean environment out of direct sunlight. Avoid areas where chemical vapors may exist.

Thoroughly inspect the full body harness after extended storage.



## 6 SPARE PARTS

BE007990

Carabiner



### 7 INSPECTION LOG

Part number:		
Year of manufacture:		
Date of first use:		
<b>Periodical inspections</b>		
Date	OK	Inspector

**Notes**

# **REBS<sup>®</sup>**

Rapid Entering and Boarding Systems

**H. Henriksen AS**  
Træleborgveien 15  
3112 Tønsberg  
NORWAY

[www.hhenriksen.com](http://www.hhenriksen.com)

**HENRIKSEN**