



HELIX

Xtract™SR Tactical Stretcher (Basic System)

Designed to minimise movement during evacuation and protect the existing treatment.

The Xtract™SR Stretcher is a modular system that can be built up from a simple fabric stretcher to a complete casualty management and transport system.

The design of the stretcher, which cocoons casualties and minimises movement was originally created to avoid secondary injuries during transportation of the patient.

Weighing just 1kg, the stretcher can be easily carried by personnel and patients can be loaded in as little as 30 seconds on a system which has a 300kg maximum load capability. The duralite fabric provides the stretcher with a lightweight capability, whilst remaining immensely strong and durable



Description	Dimensions Deployed	Dimensions Packed
Xtract™SR Stretcher - The smallest and lightest solution, ideal for foot patrol operations and buddy rescue.	2690 x 1030mm	280 x 180 x 120mm
Xtract™SR Module - Includes the Xtract™SR Stretcher, Xtract™SR Base and Xtract™SR XStraps, and is ideal when drag evacuations or prolonged care scenarios are anticipated.	-	540 x 210 x 210mm
Xtract™SR Complete - This system provides all the functionality of the Xtract™SR Module and includes the highly versatile Xtract™SR Backpack.	-	230 x 110 x 180mm
Xtract™SR Backpack	600 x 260mm	

NSN Code: Xtract™SR Stretcher - 6530-99-315-5529



Xtract™SR Stretcher (Enhanced System Elements)

Minimal size and weight allows deployment with the frontline rescuer, ensuring availability at point of injury.

- 1 Xtract™SR Equaliser is a solution carrying an Xtract™SR Stretcher and equipment. Easy access pouches with the ability to adapt configuration makes this the ideal solution for medical personnel working austere environments.
- 2 The Xtract™SR Heatseal provides targeted insulation. Its minimal size and weight focuses insulating fibres targeted at the body's core to maximise effect.
- 3 Xtract™SR Base is a detachable insulated component, designed to help protect a casualty from environmental conditions and improve their comfort. It can come fitted to your Xtract™SR Stretcher or supplied as a stand alone individual component.
- 4 Xtract™SR Backpack provides a practical rugged solution to carrying your Xtract™SR Stretcher. It can accommodate one Xtract™SR Stretcher with base attached or five Xtract™SR Stretchers.
- 5 The Xtract™SR Afloat is a compact casualty flotation product for rescuers who must cross a water obstacle in challenging environments. Xtract™SR Afloat can also be used as an insulating mattress to combat hypothermia and improve patient comfort.
- 6 Xtract™SR Stretcher. The smallest and lightest solution, ideal for foot patrol operations and buddy rescue.
- 7 Xtract™SR Stretcher XStraps are a utility tool designed to assist an evacuation and use of the Xtract™SR Stretcher.



Xtract™SR Heatsaver and Xtract™SR Deployer System

Xtract™SR Heatsaver System

The Xtract™SR Heatsaver is a major advancement in preventing hypothermia and improving overall patient care in complex environments. This unique product tackles all the causes of heat loss in the seriously injured casualty within an acceptable size and weight bracket.

- Place the casualty onto the Insulate in the Xtract™SR Stretcher.
- Place the Xtract™SR Heatseal over the casualty. Place the head wrap around the head and secure.
- Additional insulation may be required depending on the environment your working in.
- Secure Xtract™SR Stretcher around the Xtract™SR Heatseal.
- Place the Xtract™SR EPS over the casualty's head the face is not covered.
- Pull the Xtract™SR EPS down and secure over the feet.

Instructions for Xtract™SR Insulate

- Unclip the three buckles on the Xtract™SR Deployer.
- If required, secure the Xtract™SR Deployer into the ground using the two grommet holes and tent pegs.
- Unscrew the top of the inflation valve, located at the bottom of the Xtract™SR Insulate.
- Inflate Xtract™SR Insulate by blowing into the one-way valve until the chamber is fully inflated.
- Refit the top of the inflation valve. Ensure the top of the inflation valve is screwed fully home.
- Place Xtract™SR Insulate into the Xtract™SR Stretcher.



Xtract™SR Deployer



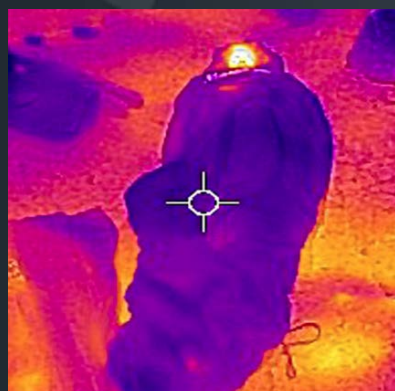
Xtract™SR Insulate



Xtract™SR Heatseal



Xtract™SR EPS



"In both military and civilian trauma, it has been reported that 100% mortality occurs when core temperature is less than 32°C".

B.L Bennett, G Giesbrecht K Zafren et al. Management of Hypothermia in Tactical Combat Casualty Care. Journal of Special Operations Medicine, September 2020, Volume 20, Edition 3. 21- 2.

Xtract™SR Afloat (Float Capabilities)

Intuitive design facilitates competent use.

Whether crossing a jungle river, evacuating a flooded house, crossing a canal in Iraq or negotiating melted water in the Arctic, water obstacles often pose a significant risk to the safety of both casualties and rescuers. Xtract™SR Afloat gives rescue teams a small, lightweight, viable solution.

- The Xtract™SR Afloat is a compact casualty flotation product for rescuers who must cross a water obstacle in challenging environments. Xtract™SR Afloat can also be used as an insulating mattress to combat hypothermia and improve patient comfort.
- The three buoyancy chambers can be inflated in any order.
- Unscrew the top of one the inflation valves.
- Inflate the associated buoyancy chamber by blowing into the one-way valve until the buoyancy chamber is fully inflated.
- Refit the top of the inflation valve. Ensure the top of the inflation valve is screwed fully home.
- Repeat the previous three steps for the remaining two inflation valves.



Note: Check that there are no leaks from any of the three buoyancy chambers. The casualty **MUST** be in an Xtract™SR Stretcher in order to use the Xtract™SR Afloat. There must be at least one person at the head of the Xtract™SR Afloat at all times when a patient is placed in the device whether on dry ground or in the water.

- 1) Place the casualty held within an Xtract™SR Stretcher onto the Xtract™SR Afloat. Make sure the orientation is correct with the casualty's head at the end of the Xtract™SR Afloat.
- 2) Release all the straps that secure the casualty in the Xtract™SR Stretcher.
- 3) Secure the Xtract™SR Stretcher to the Xtract™SR Afloat using the 11 toggles.



Xtract™SR Afloat





Woodlands House
Parc Britannia
Parc Menai
Bangor
Gwynedd
LL57 4FA

sales@helixoperations.com